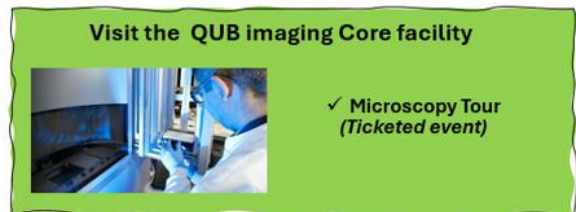

NISF @ WWIEM, 15th Feb 2025



A special thanks to all our volunteers!

The WWIEM held an open day at the Northern Ireland Science Festival on 15th of February 2025 aimed to celebrate science, foster curiosity, and promote STEM education among participants of all ages. The event attracted a diverse audience of over 230 visitors, including families, students, educators, and science enthusiasts from the local community and beyond.

The success of the Science Festival would not have been possible without the invaluable contributions of our dedicated volunteers. Over 50 volunteers generously donated their time and expertise to assist with event planning, setup, coordination, and participant engagement. Their enthusiasm, professionalism, and passion for science outreach greatly enhanced the overall experience for attendees.

Activities and Exhibits:

Three events took place at the same time featuring a wide range of interactive exhibits, hands-on activities, workshops, and presentations designed to engage and educate participants about various scientific concepts and discoveries within our centre.

- ✓ **The QUB experimental Medicine Showcase**
- ✓ **Explore Inside the lab with cell culture demonstration and a tour**
- ✓ **Visit the QUB Imaging Core Facility (organized by the QUB AIH core unit)**

We have gathered some photos below that capture the highlights from the day!

Reception Desk

Our reception team's tireless efforts ensured that every attendee felt welcomed and assisted throughout the event. They greeted, guided, organized, and answered all inquiries, playing a significant role in creating a welcoming atmosphere for all volunteers.



The QUB experimental Medicine Showcase

Various groups came together to showcase a diverse range of interactive exhibits and hands-on activities, designed to engage and educate participants about the exciting scientific work happening at our Centre. Volunteers generously contributed their time and expertise, assisting with event planning, setup, coordination, and participant engagement. Their enthusiasm, professionalism, and passion for science elevated the experience for all attendees, and we are truly grateful for their dedication!

Cardiovascular Health (Grieve & Watson Labs)



Stem Cell Research (The stem cell group, led by Margariti Lab)



“Love your Lungs” (The Respiratory group led by Schock, Taggart and McDowell labs)



Immunology Station (Malinova lab)



The GPCR Station (Plouffe Lab)



Microbiology Station (led by Schroeder & Valvano Labs)



Genomics and Bioinformatics Station (Lopez Campos & Simpson Labs)



Eye and Vision Station (The WWIEM/CPH vision group led by Lengyel & Peto)



Paediatric Infections in the ER (Waterfield Lab)



The Kidney Corner (Brazil lab and the NI Kidney Research Fund)



Explore Inside the Lab

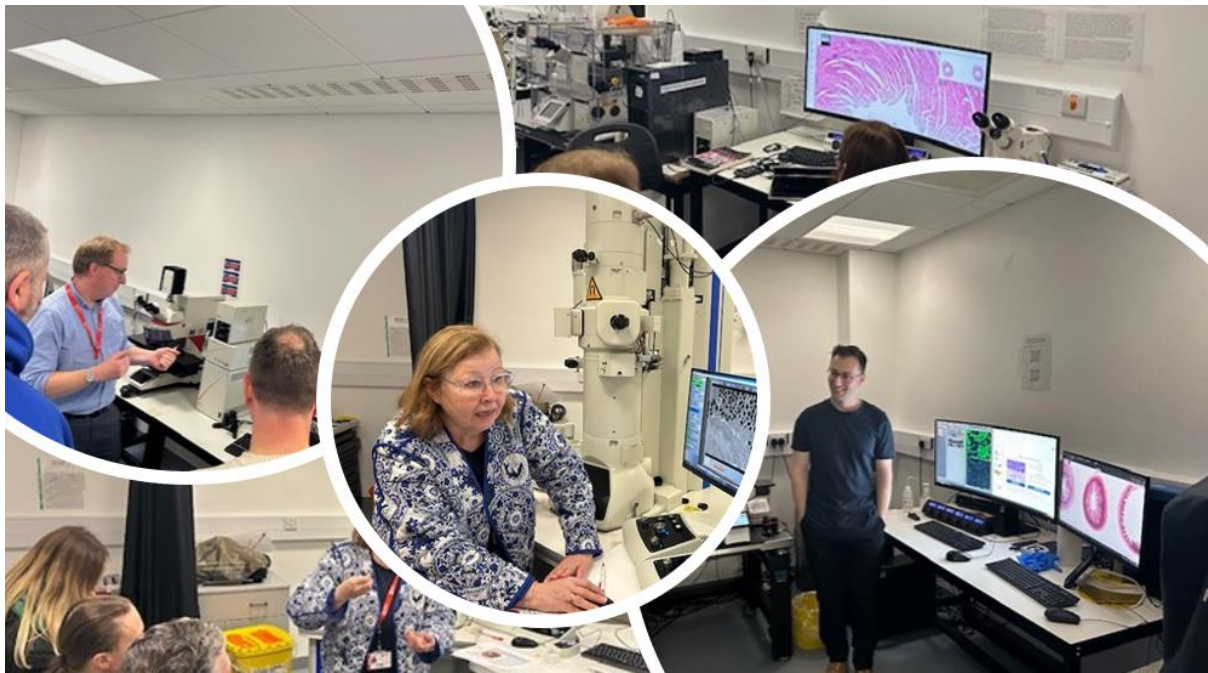
We also organized a hands-on cell culture experience, where visitors learned the fundamental principles of cell culture and had the exciting opportunity to step into the role of a scientist. A big thank you to all the volunteers for their support and to Clara Radulescu for her leadership in making this session a success!



The workshop was complemented by a guided tour, giving visitors a firsthand look at a real cell culture room and a scientist in action. A heartfelt thank you to all the volunteers who helped coordinate the tour and demonstrations!

Visit the QUB Imaging Core Facility

At the same time, the Advanced Imaging and Histology Unit hosted another exciting tour within the Centre. Featuring five interactive stations, Ileana, Ryan, Carmel, Prof. Curtis, and Dr. Adrain provided an in-depth exploration of the fundamental principles of imaging, microscopy, and histology, along with their various applications. Engaged visitors, eager to learn more about science, kept our experts on their toes with sharp and insightful questions.



Special thanks to all volunteers



A special thank you to all the incredible volunteers who made this event possible! Your dedication, enthusiasm, and hard work were the driving force behind creating such a vibrant and rewarding outreach experience. Without your participation, bringing our research to the public in such an engaging way would not be possible. We are truly grateful for your commitment and for making this year's NISF event one of the highlights of the year!

Sincerely,

Organizers:

Prof David Simpson

Dr Eleni Beli

On behalf of the WWIEM Outreach Committee